

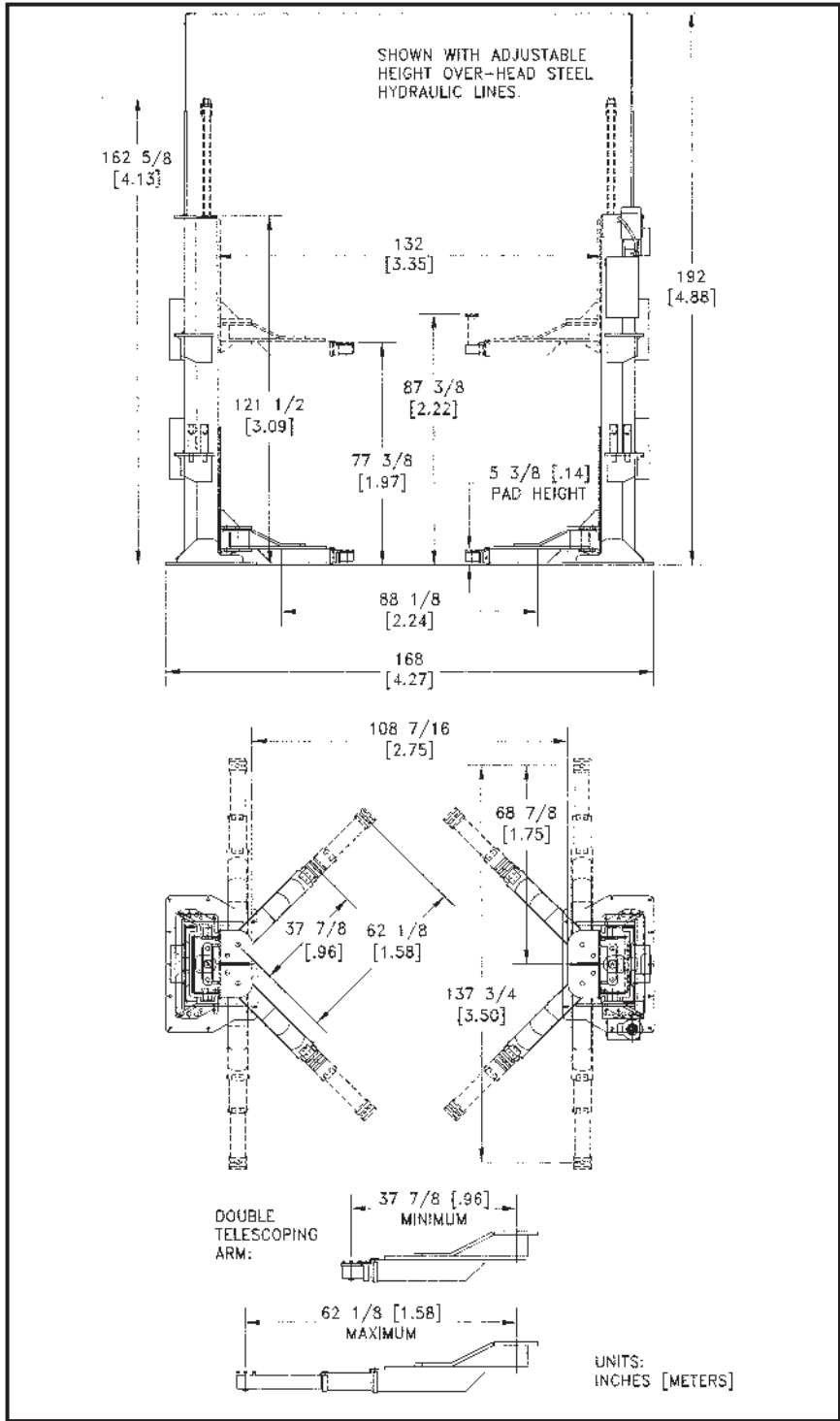
MOHAWK TP-20 SPECIFICATIONS

20,000 LB. CAPACITY TWO POST LIFT

MODEL:	TP-20
Capacity:	20,000 lbs.
Lifting Speed:	140 seconds or 90 seconds with optional 5 HP 3 phase
Motor Rating:	3 HP/208-230 VAC, single phase (3 phase optional)
Synchronization:	Hydraulic fluid displacement using no chains, cables, or overhead obstructions
Arm Pad Height:	5 3/8" (13.6cm)
Lifting Height (Stroke):	6' (1.83 m)
Arm Height @ Full Rise:	6' 5 3/8" (1.97m)
Max. Pad Height with Adaptors:	7' 3 3/8" (2.22m)
Overall Width:	14' (4.27m)
Width Between Posts:	11' (3.35m)
Width Between Carriage:	9' 7/16" (2.75m)
Column Height:	10' 1 1/2" (3.09m)
Max. Cylinder Height:	13' 6 5/8" (4.13m)
Overhead Hydraulic Line:	16' Standard. Optional to any height
Shipping Weight:	7000 lbs. (3175 Kg)
Anchoring System:	4000 psi concrete, 6 1/2" minimum thickness
Mechanical Safety Locks:	Multi-position, interlocked redundant safety systems
Hydraulic Safety Systems:	Automatic; all Position
Swing Arm Restraint:	Automatic upon ascent
Cylinders:	2 (1 per column)
5", 7 1/2", 10" Frame Adaptors (stackable):	4 each included - standard
Carriage Bearings:	(16) 5" (12.7cm) diameter (8 per carriage) double-sealed, self lubricating ball bearing rollers
Side Load Bearings:	(8) 4" (10.2cm) diameter (4 per carriage) double-sealed, self lubricating ball bearing rollers
Floor Access Between Posts:	Clear and unobstructed
Warranty:	5 years; Limited lifetime on cylinders*

Mohawk builds the best products with the finest materials, to the highest standards. Just compare our lifts. Our staff will assist you with any technical questions you have. We invite your calls.

Mohawk lifts are manufactured in compliance with the following standards: OSHA, ALI, ANSI, ASME, AISI, ASTM, ASA, NEC, AWG, NEMA.



specifications subject to change without notice

DISTRIBUTED BY:

MOHAWK

Mohawk Resources, LTD.
P.O. Box 110
65 Vrooman Ave
Amsterdam, NY 12010
(800) 833-2006
(518) 842-1431
FAX: (518) 842-1289
www.mohawklifts.com

Available under state contract in

CA NY
CT OH
FL TX

GSA contract #GSO7F-7099B



MOHAWK TP-20

SOLID, SAFE & CERTIFIED.



THE LIFT FOR ALL YOUR FLEET



▲ Mohawk large and stable footprint measures 48" wide x 30" deep and is made of 1" thick plate. Mohawk's large base gives stability to the lift, while distributing the load to the shop floor. The TP-20 only requires 6 1/2" of concrete.



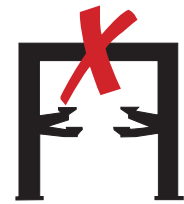
▲ Mohawk's all position mechanical and hydraulic safety systems lock the vehicles at ALL working heights. Mohawk safeties consist of 1 1/2" plate steel locks engaging into the slotted carriage lock racks every 6" inches.



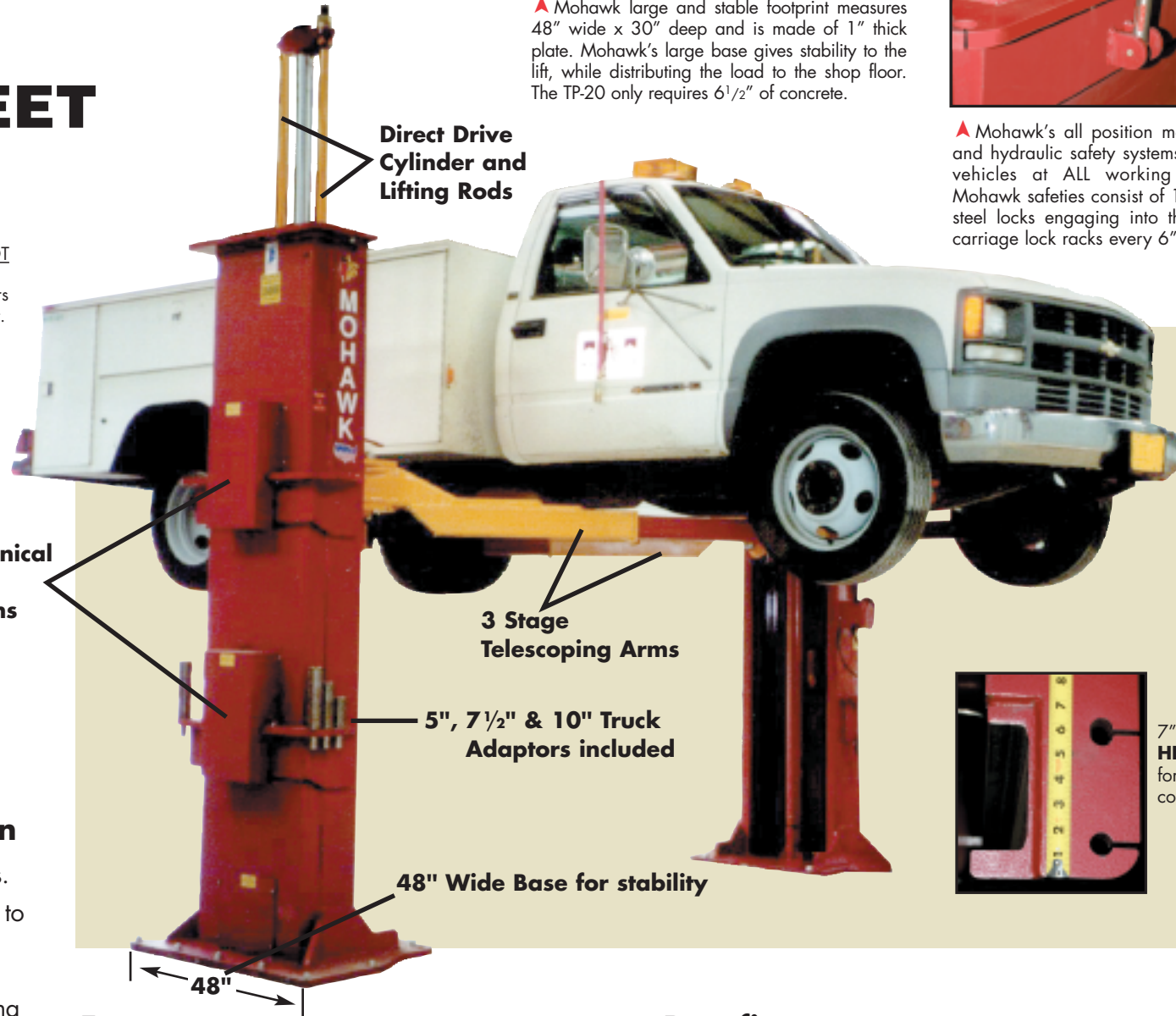
▲ 3 HP single or 3 phase electric/ hydraulic power unit delivers fluid to large twin hydraulic cylinders. Optional 3 phase 5HP motor speeds the lifting cycle to 90 seconds.



▲ Mohawk's TP-20 gives FULL under vehicle access for all repairs, takes up minimal bay space, while leaving the wheels hanging free for tire, brake or any other necessary repairs.



Mohawk lifts **DO NOT** use height restrictive overhead cable covers that limit lifting height.



Mohawk TP-20 design

- Lifts vehicles up to 20,000 lbs.
- Surface mounted design bolts to the shop floor.
- No in-ground oil tanks, no digging for installations, making installations fast and service easy.
- Low profile, 3 stage arms for access under compact cars through medium duty trucks.
- All safety certified to meet national and local OSHA & ANSI codes (ANSI/ALI ALCTV-1998) for the safety of your shop's employees.
- Light thru medium duty vehicles, Mohawk's TP-20 lifts them all.

Features

- Constructed of heavy 7" x 1" fork lift mast channels (NOT formed sheet metal)
- Each of the carriages ride on double sealed, self lubricating ball bearing rollers (NOT plastic slide blocks) for a lifetime of maintenance free service.
- Direct drive lifting rods attached to each cylinder and carriage (no cables, chains, or pulleys) means no parts to wear or maintain
- WIDE 48" base for stability.

Benefits

- 3 section swing arms make positioning easier than a 2 stage arm and increases lifting range, for all wheelbases.
- 5", 7 1/2" and 10" stacking truck adaptors included to reach truck frames and get around fuel tanks or tool boxes.
- Built Mohawk TOUGH—the TP-20 is the virtually the same structural column and same carriage used in Mohawk's TP-26 and TP-30!
- Built to last **forever**.



7" wide by 1" thick **HIGH STRENGTH** fork lift channel construction

All photos shown with optional in-floor hydraulic lines.

▼ Mohawk's direct lifting system eliminates cables, chains and any wear items in the drive system. Direct drive lifting is achieved from the cylinder to the 1 1/2" steel drive rods, which bolt to the carriage.



▲ Mohawk TP-20 columns are constructed of 1" thick, high strength fork lift mast channels, using 24 double sealed, self lubricating ball bearing rollers to smoothly raise the lift, using large 4 1/2" cylinders for a lifetime of trouble free service.

Safeties

- Single position mechanical lock release, located at the main post, unlocks both safeties.
- Release the mechanical locks with Mohawk's air cylinders. Upon release, safeties immediately re-engage.
- 20,000 lb. capacity to safely raise fully loaded work and utility trucks.
- 12 position 1 1/2" steel plate safety locks in each post start engaging at 5" and continue every 6" through the full lifting height.



▲ Mohawk double telescoping 3 stage swing arms are only 5 3/8" high to fit under the passenger cars in your fleet. Triple telescoping arms allows lifting of vehicles from large utility trucks, down to short wheelbase sub-compact cars.