

MP SPECIFICATIONS

MOBILE COLUMN LIFTS

	MP-18-15	MP-18-22
Capacity:		
Capacity per post	18,000 lbs.	16,000 lbs.
Lifting speed:	66 sec.	66 sec.
Motor rating (per column):	2.5 H.P.	2.5 H.P.
Standard power requirement:	208/240 V or 440/480 V 3 phase (single phase option available)	
Amperage requirement:	10 AMPES (per post)	
Lifting height (stroke):	67"	67"
Lifting mechanism:	Direct drive hydraulic cylinders	
Cylinder protection:	Full steel enclosure	
Clearance between carriage & vehicle:	10"	10"
Carriage movement:	Double sealed roller bearings	
Synchronization:	Automatic SIEMENS ® PLC controlled	
Lifting forks range:	13" to 24" wheels	
Lifting fork height/angle:	3 1/2" and 28 degrees	
Maximum tire diameter:	48"	48"
Front wheels:	6 5/8" sealed roller bearings	
Steering system:	Pallet jack mech. w/OSHA approved handle & pressure relief valve	
Mechanical safety locks:	19 position starting at 12"	
External hydraulic safety systems:	Pressure compensated flow control valving & velocity fuses	
Electrical safety systems:	Electronic sensors in each column	
Floor requirement:	Any hard, level surface	
Control voltage:	24 volts	24 volts
Warranty:	3 years	

- Available Options**
- Mobile jack stands (spring assisted)
- | Model | Range | Capacity per stand |
|----------------------|------------|-----------------------------|
| MJS18-30-18/24/30/40 | 18" TO 30" | 18,000/24,000/30,000/40,000 |
| MJS30-47-18/24/30/40 | 30" TO 47" | 18,000/24,000/30,000/40,000 |
| MJS47-75-18/24/30/40 | 47" TO 75" | 18,000/24,000/30,000/40,000 |
- Chassis contact lifting beam
 - Extended forks
 - 460 or 575 volt power units
 - Runways & approach ramps
 - Remote pendant control
 - Fork lift adaptor
 - Automotive frame contact adaptor
 - Winged snow plow adaptor
 - Wider carriages
 - Lifting height limiter
 - Single phase power
 - Double wide columns
 - Front to rear bumper adaptor
 - **Heavier capacities on request**

Mohawk builds the best products with the finest materials, to the highest standards. Just compare our lifts. Our staff will assist you with any technical questions you have. We invite your calls.

Mohawk lifts are manufactured in compliance with the following standards: ANSI, ASME, AISI, ASTM, OSHA, ASA, NEC, AWG, NEMA.



Mohawk Resources, LTD.
 P.O. Box 110
 65 Vrooman Ave
 Amsterdam, NY 12010
 (800) 833-2006
 (518) 842-1431
 FAX: (518) 842-1289
www.mohawklifts.com

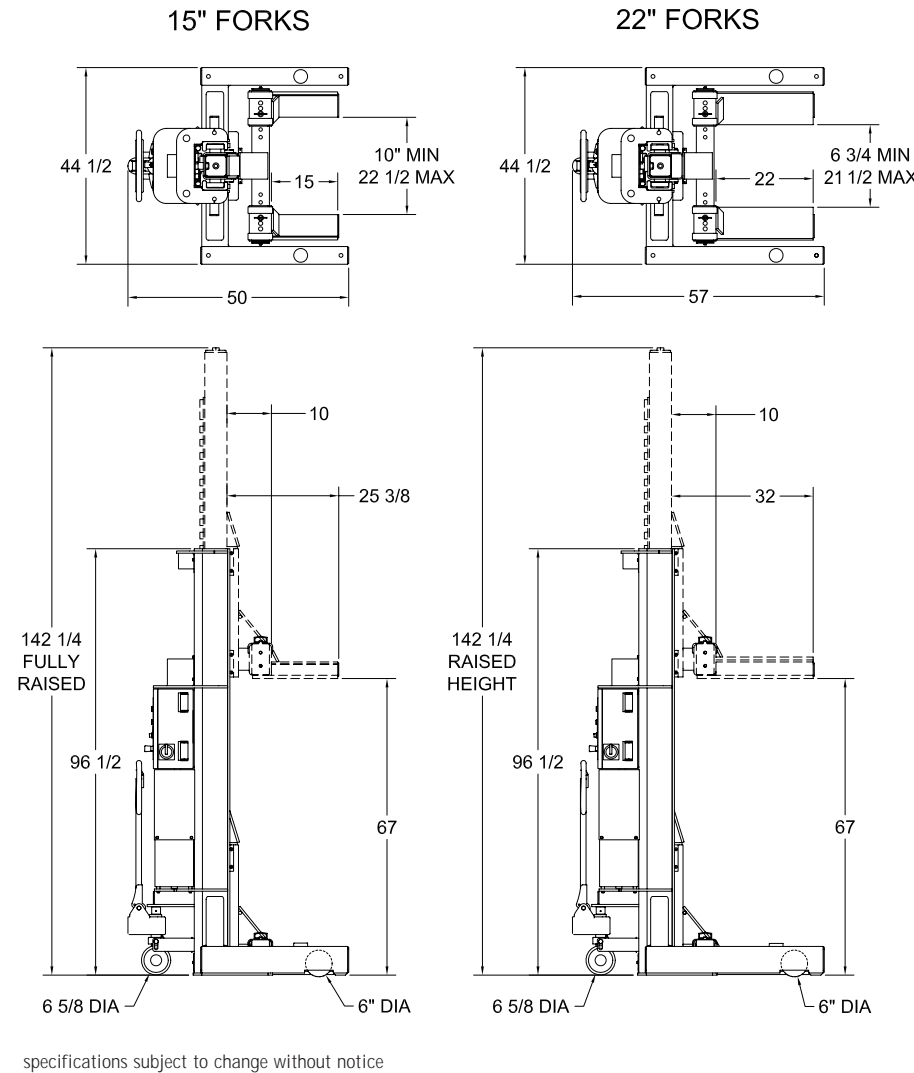


GSA contract #GS07F-7099B

AVAILABLE UNDER STATE GOVERNMENT CONTRACTS IN ALL 50 STATES



Mohawk MP-18 Specifications



M O D E L S

Mohawk MP Series Mobile Column Lifts

16,000 lbs. & 18,000 lbs. per column capacities



MOHAWK - because...
 Quality Lasts a Lifetime



Made in the U.S.A.



PORTABLE, POWERFUL & PRODUCTIVE

Mohawk MP Series Mobile Column Lifts



Mohawk use **SIEMENS**® PLC computer controls for continuous synchronization of all columns. All posts can control all columns, pairs or single column operation. Each post equipped with emergency shut off switch.

Mohawk mobile columns are built from 5 3/4" fork lift mast sections, featuring double sealed, self lubricating cylindrical roller bearings for smooth, safe lifting and lowering.

Mohawk lifts move via large **TWIN**, 6 5/8" diameter, rubber coated steel wheels, to easily roll over expansion seams, dirt, & debris. Mohawk-the easiest columns to move. No steel or plastic wheels.

Mohawk lifts easily roll on 6" rubber coated steel wheels (not plastic) which **retract** when raised, to load the weight on the lift & shop floor (not the lifts wheels).

Mohawk adjustable lifting forks are available in either 15" or 22" lengths for floatation tires or super-singles for safely lifting both rear tires. Forks adjust & lock for tire sizes from 48" down to 14" with wheels from 24" to 13" diameter.

19 locking positions spaced every 3", with ability to 'park' the load on locks



Mechanic shown is 6'3"



Fork Lift adaptor and ramps permit two columns to be used to raise fork lifts.

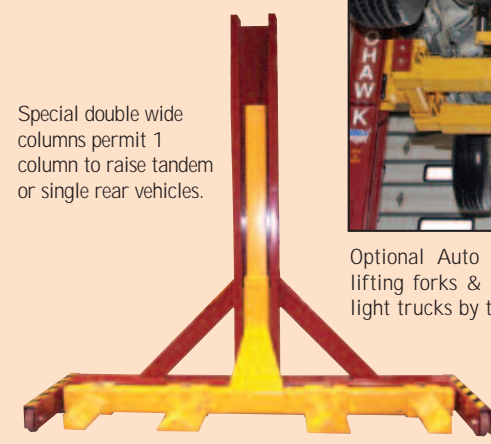


Chassis lifting beam permits vehicles to be raised by the frame, leaving the wheels hanging free.

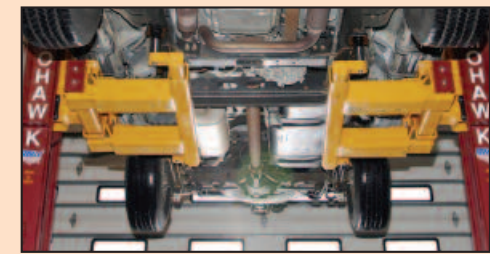


Wing plow adaptor permits snow trucks to be raised **without** the lengthy process of removing wing plows to gain access to the front tire for lifting.

AVAILABLE ACCESSORIES



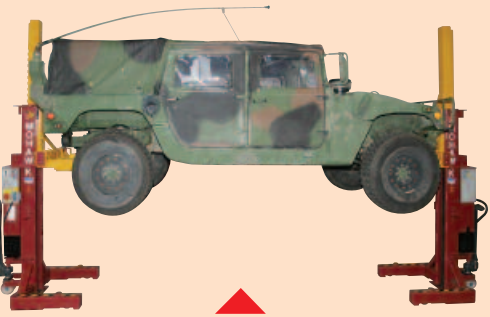
Special double wide columns permit 1 column to raise tandem or single rear vehicles.



Optional Auto Frame adaptor quickly slides over lifting forks & allows two columns to raise cars & light trucks by the frame to leave wheels free.



Optional low, mid & full height jack stands allow multiple vehicles to be raised with just 1 set of lifting columns



Front to rear frame adaptor slips over the forks to allow vehicles to be raised front to rear by the frames.

S M A R T

- All columns operate together, individually or can be divided into separate pairs.
- All columns act as control column to raise or lower vehicles.
- 67" lifting stroke for tall mechanics.
- Adjustable lifting forks accommodate the widest range of wheels from 13" to 24" for up to 48" diameter tires (wider carriages optional for larger tires). No wheel reducer sleeves needed.
- Optional Auto Frame adaptor available for passenger cars & light trucks.
- Sealed rollers on the wheels for easy movement of the columns.
- Hydraulic operation (no screw drives) for efficient, fast & easy lifting.
- Sealed roller bearings on carriages for a lifetime of trouble free service (no plastic slide blocks or plastic rollers).
- 208-240 or 440-460 volt three phase operation or optional single phase.
- Communication and electrical cables disconnect at **both** ends.

- Manual safety over-ride permits columns to be lowered in a power outage **without using hand cranks**.
- Set the vehicle on jack stands and use the columns to raise another vehicle in an adjoining bay. Low, mid & high rise spring assisted jack stands feature 7" of additional adjustment. Heavier stands available upon request.
- Low profile fork angle for easy positioning of columns, especially for floatation tires.
- Mix 15" & 22" fork models to safely raise all vehicles & **fully contact tire surface**.

S A F E

- 19 safety lock positions spaced every 3" starting at 12".
- Locking pins prevent movement of **adjustable** forks.
- Pressure sensitive pallet jack type **DUAL STEERING WHEELS** lower when weight is applied (vs. spring loaded steering wheels which can cause columns to roll when not loaded).

S T R O N G

- Low mounting of power units means low center of gravity makes moving the columns easier vs. topple prone "top heavy" columns.
- 15" lifting forks handle wide tires or 22" long forks for raising BOTH dual rear tires (22" forks reduce capacity to 16,000 lbs. per column).
- 18,000 lbs. per column = 36,000 lbs per axle. Raise loaded trucks with just 4 columns (72,000 lbs) where other lifts need 6 columns.
- Column construction made of 5 3/4" fork lift channel sections. Mohawk does not use I beam, H beam, bent sheet metal or rectangular tubing for structural integrity.
- Carriages ride on roller bearings for smooth steady lifting. No plastic slide blocks or plastic rollers.
- **Larger capacities & wider carriages available.**